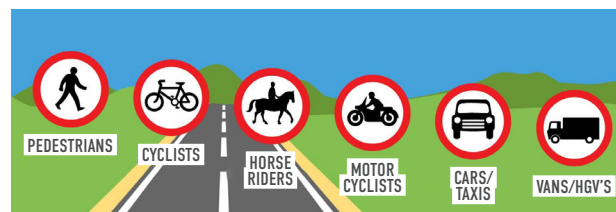


HIGHWAY CODE UPDATES

Four of the biggest changes

➔ Rule H1: New hierarchy of road users

Drivers of vehicles that can cause the greatest harm in the event of a collision bear the greatest responsibility to take care and reduce the danger to others. This applies to those driving lorries, trucks, buses, cars, and motorcycles. Cyclists have a responsibility to reduce danger for those walking on foot.



➔ Rule H2: New priority for pedestrians at junctions

Drivers, motorcyclists, and cyclists should give way to pedestrians crossing or waiting to cross a road into which or from which you are turning. You should also give way to pedestrians waiting at a zebra crossing, and to pedestrians and cyclists waiting to cross a parallel crossing.



➔ Old rule

Vehicles have priority at junctions.

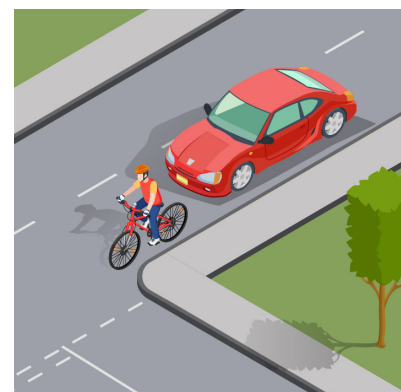


➔ New rule

Vehicles give way to pedestrians at junctions.

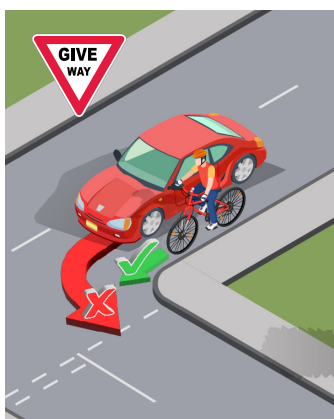
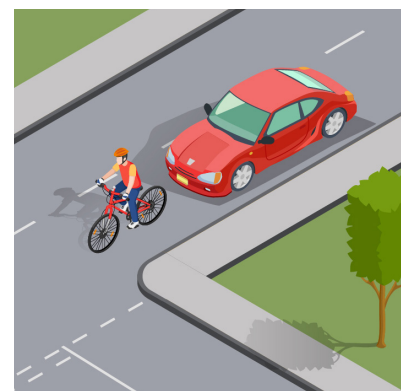
➔ Cycle road positioning

Road positioning for cyclists was not previously mentioned in the code, but most drivers expect them to ride near the curb.



➔ New Rule 72

Ride in the centre of the lane to make yourself visible in certain situations.



➔ Rule H3: Priority for cyclists when cars are turning

Vehicles such as lorries, trucks, buses, cars, and motorcycles should not cut across cyclists when turning into or out of a junction or changing direction or lane. They should give way to cyclists whether they are using the road, a cycle lane, or a cycle track. They should not turn at a junction if to do so would cause YOU the cyclist going straight ahead to stop or swerve. The driver should stop and wait until it is safe to turn.



CYCLING SERVICE EXPERTS